

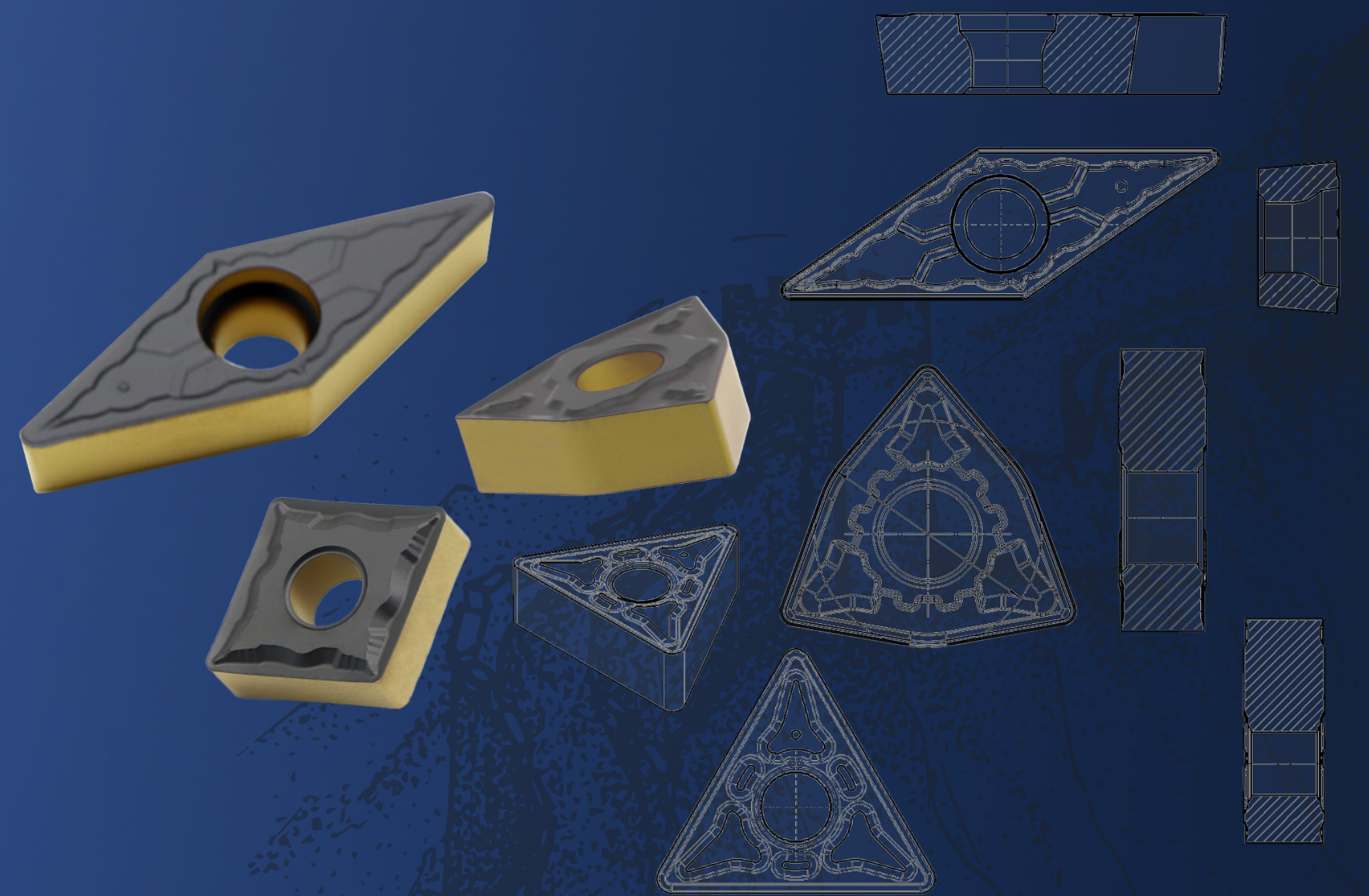
成都长城切削刀具有限责任公司



CHENGDU
GREATWALL CUTTING TOOLS
CO.,LTD



TURNING INSERTS FOR CAST IRON

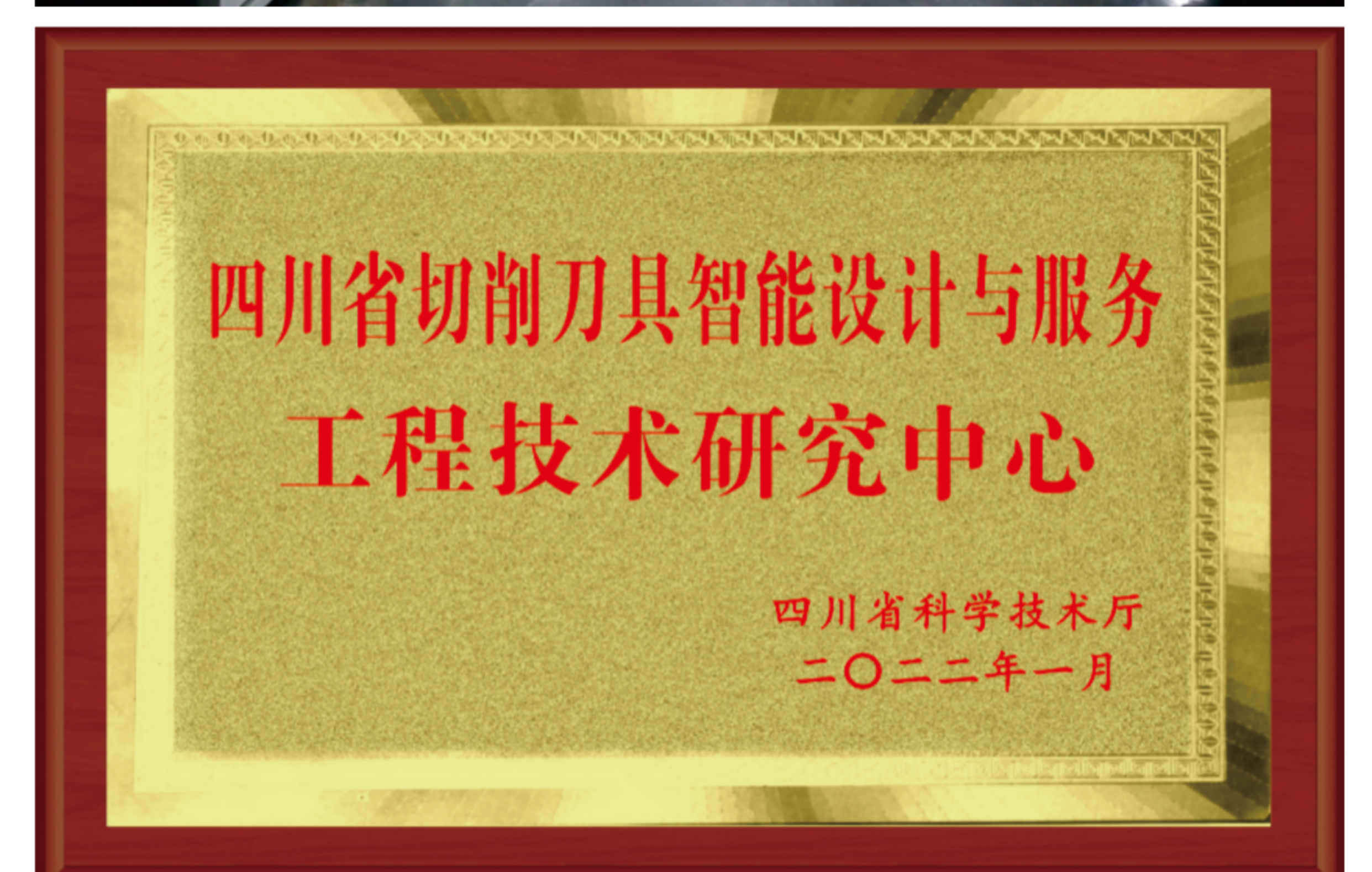




CHENGDU GREATWALL CUTTING TOOLS CO.,LTD



- Affiliated with China Minmetals Corporation, a Fortune Global 500 company.
- The company boasts two specialized production lines for blades and cutting tools.
- Integrating the research and development of carbide insert and tool materials, structural design, coating technology, as well as testing and analysis.



QUALITY ACCOMPLISHES
THE FUTURE

Main Products

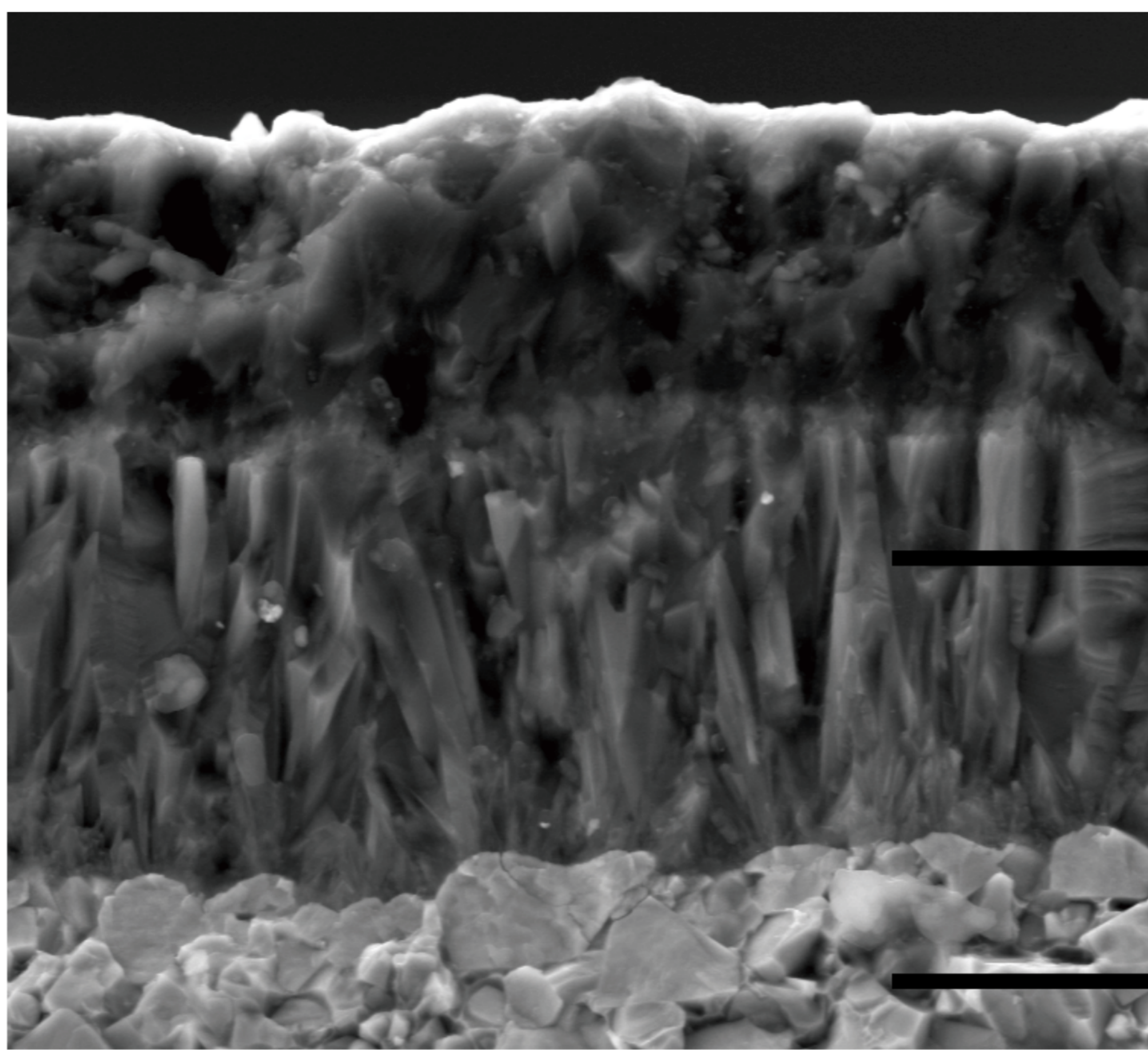
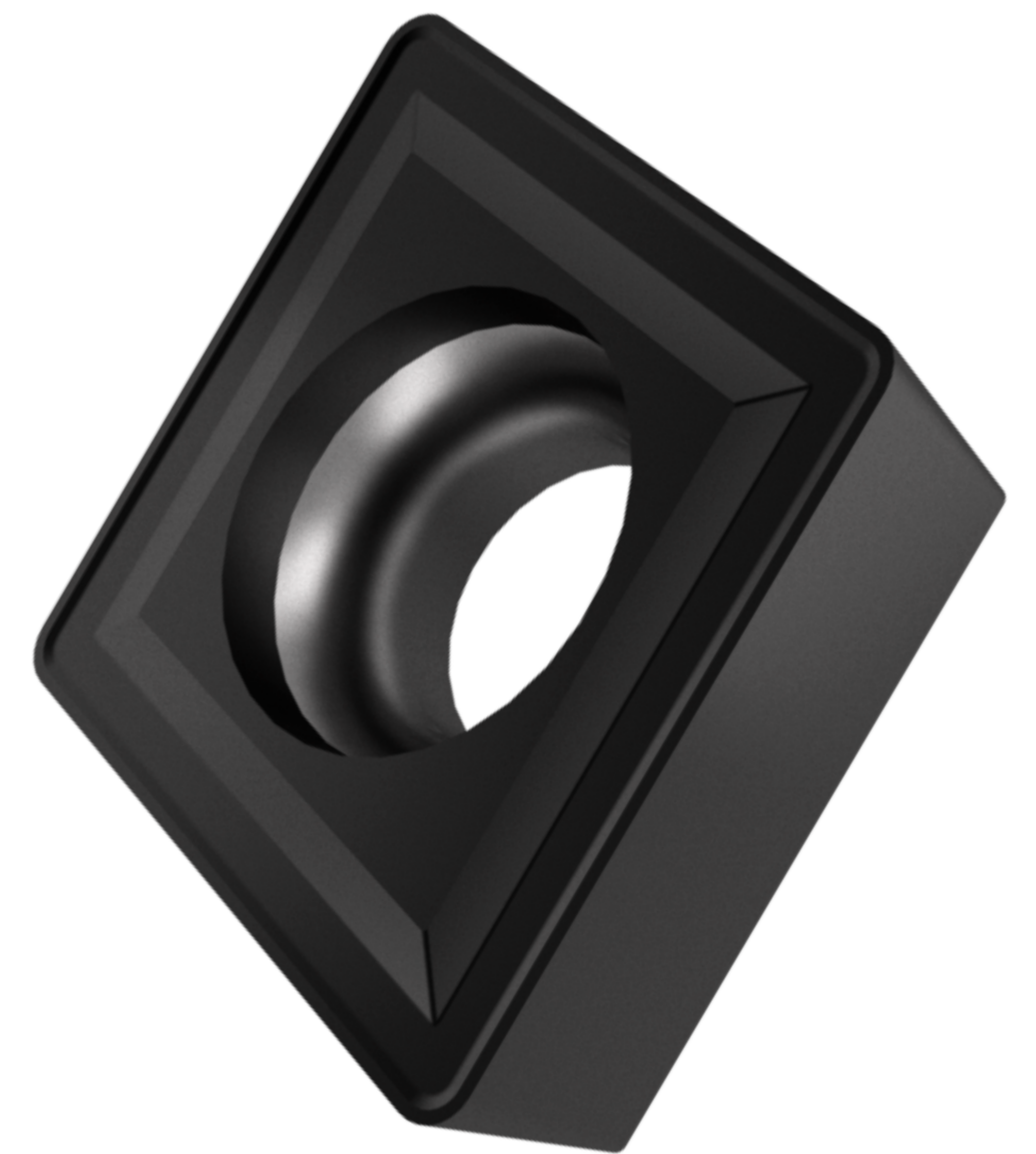
The company's main products include indexable CNC inserts, solid carbide cutting tools, and machine-clamped or welded conventional blades. It owns the cutting tool brand "Great Wall," which covers a wide range of machining applications including turning, milling, drilling, reaming, and broaching. The products are renowned for their consistent quality, superior performance, and are extensively applied in industries such as aerospace, defense, automotive manufacturing, wind power generation, and mold making. As a long-term supplier to numerous aerospace enterprises and leading automotive brands, the company holds a prominent position in its sector.



GRADE INTRODUCTION

GW5005

- High-speed continuous turning has high toughness and resistance to plastic deformation.
- Using a thick TiCN + thick Al_2O_3 CVD coating, it has undergone special surface post-treatment, providing high wear resistance and high-temperature oxidation resistance.
- Suitable for high-speed machining of cast iron.



CVD coating

Application range : K05-K20

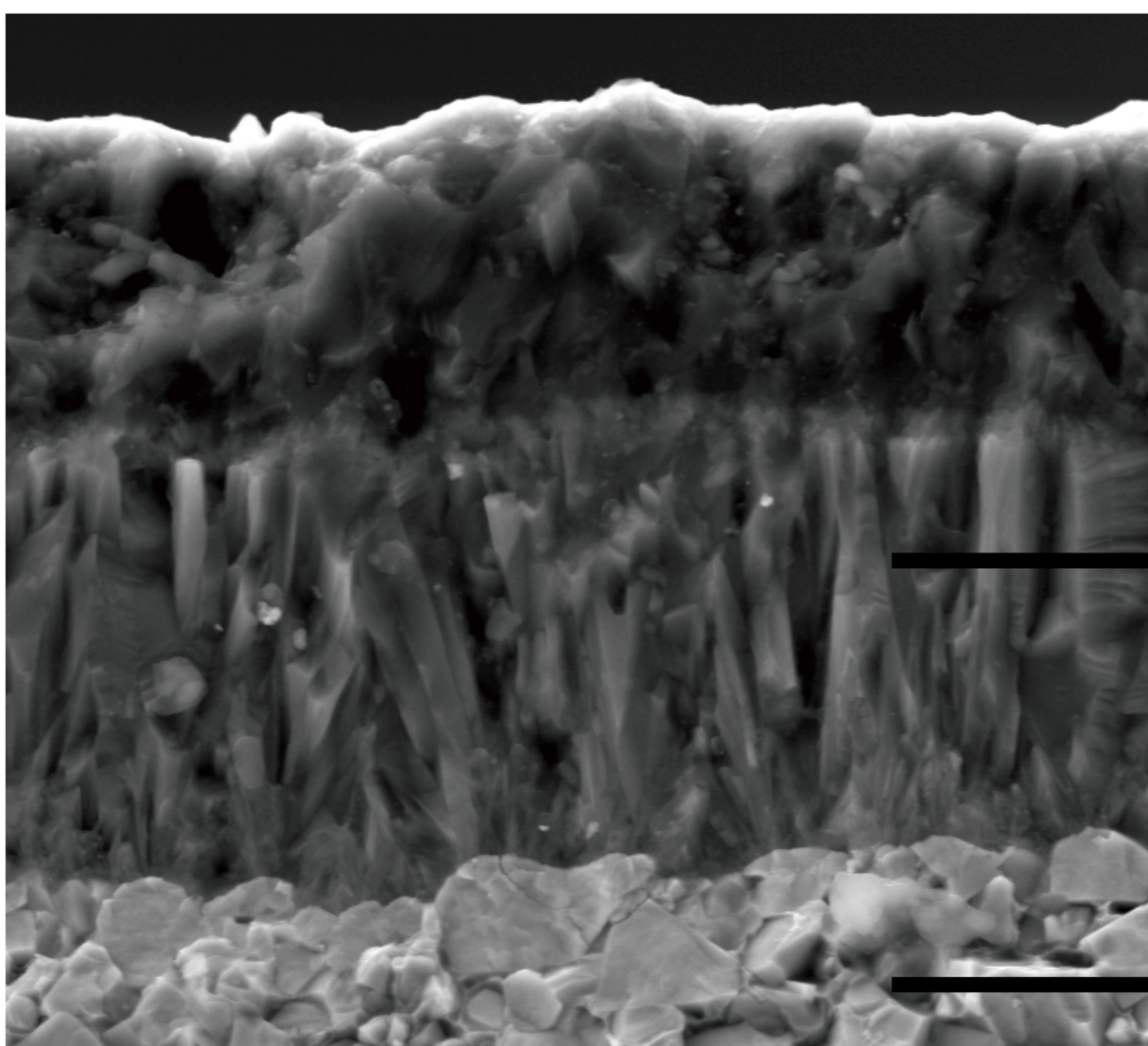
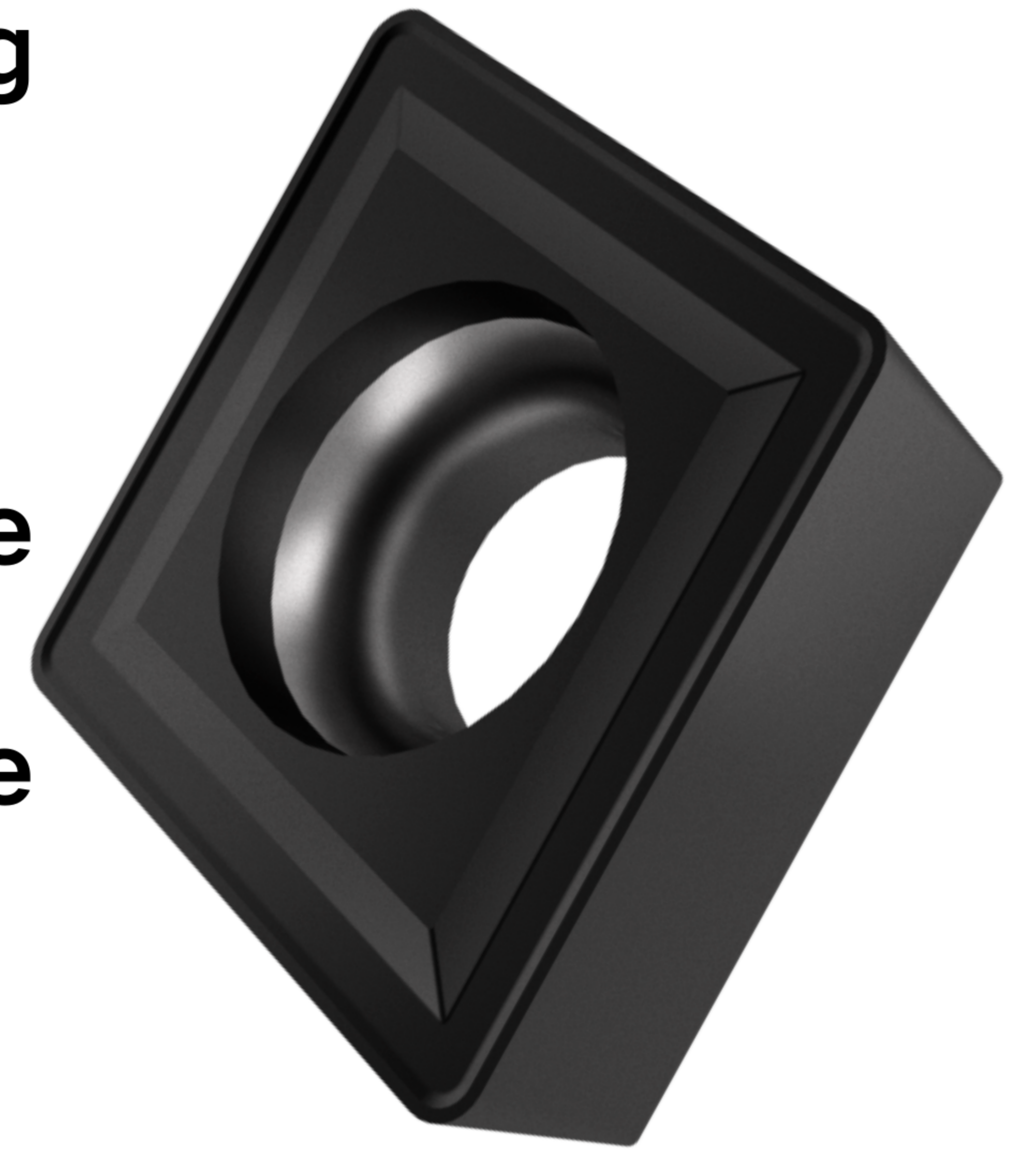
An excellent high-temperature resistant ultra-thick aluminum oxide coating, featuring high wear resistance and high-temperature oxidation resistance.

• A substrate combining hardness and toughness.

QUALITY ACCOMPLISHES
THE FUTURE

GW5015

- A substrate that combines hardness and toughness, featuring high wear resistance and resistance to plastic deformation.
- Using a thick TiCN + thick Al₂O₃ CVD coating, it has undergone special surface post-treatment, providing high wear resistance and high-temperature oxidation resistance.
- Suitable for medium-to-high speed machining of gray iron and ductile iron, as well as milling of various cast iron materials.



CVD coating

Application range : K15-K30

An excellent high-temperature resistant ultra-thick

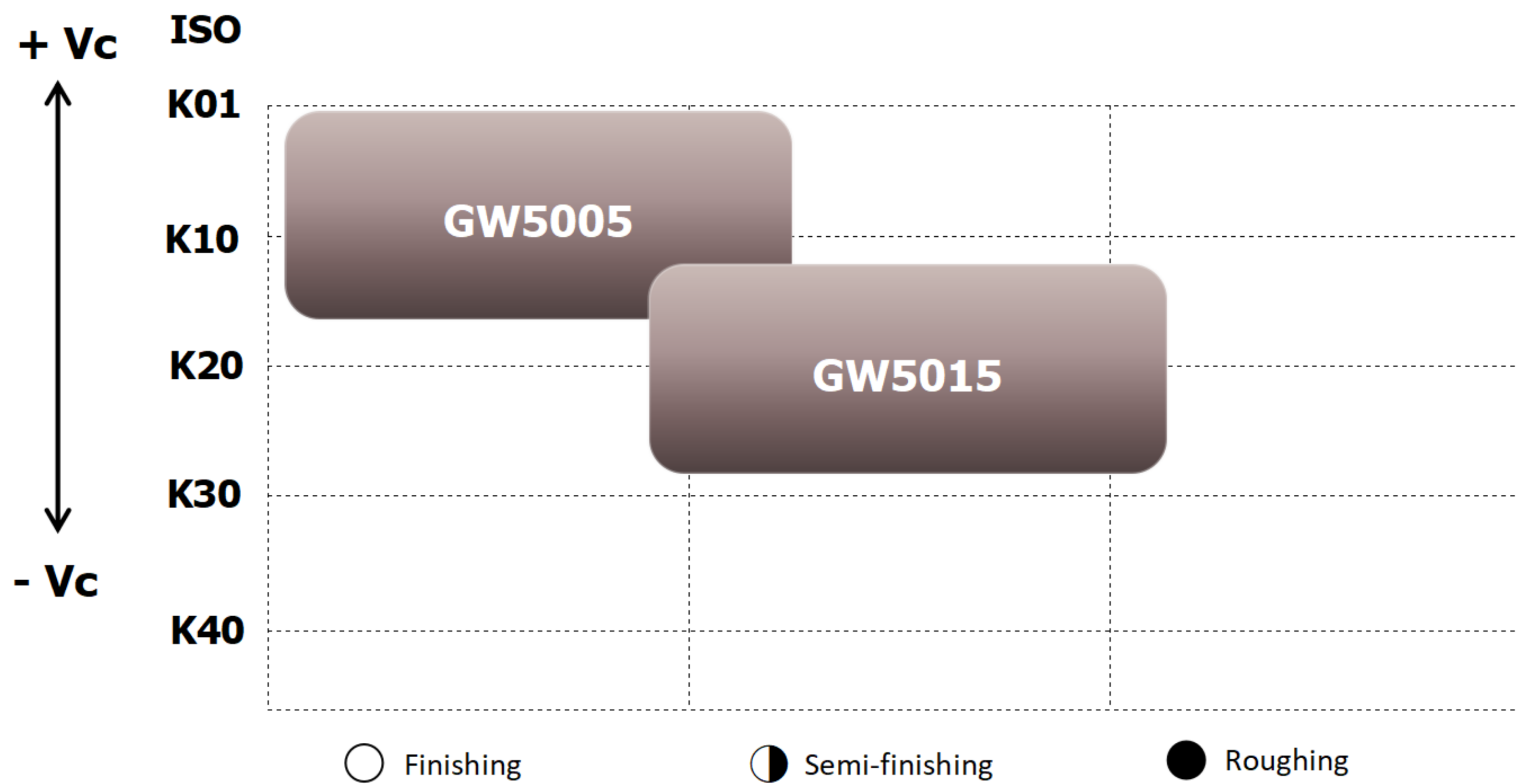
aluminum oxide coating, featuring high wear

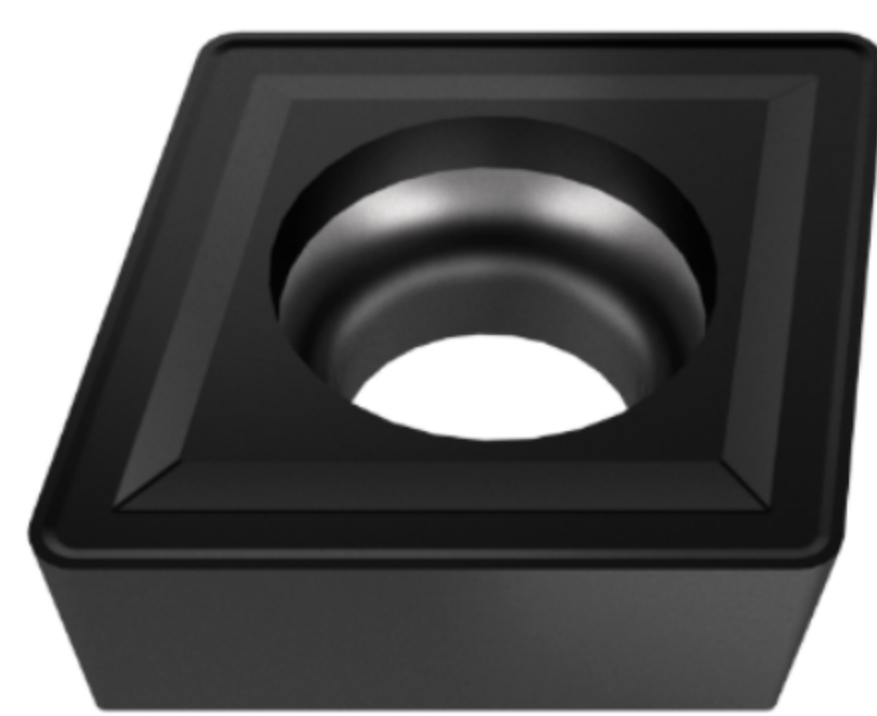
resistance and high-temperature oxidation resistance.

A substrate combining hardness and toughness.

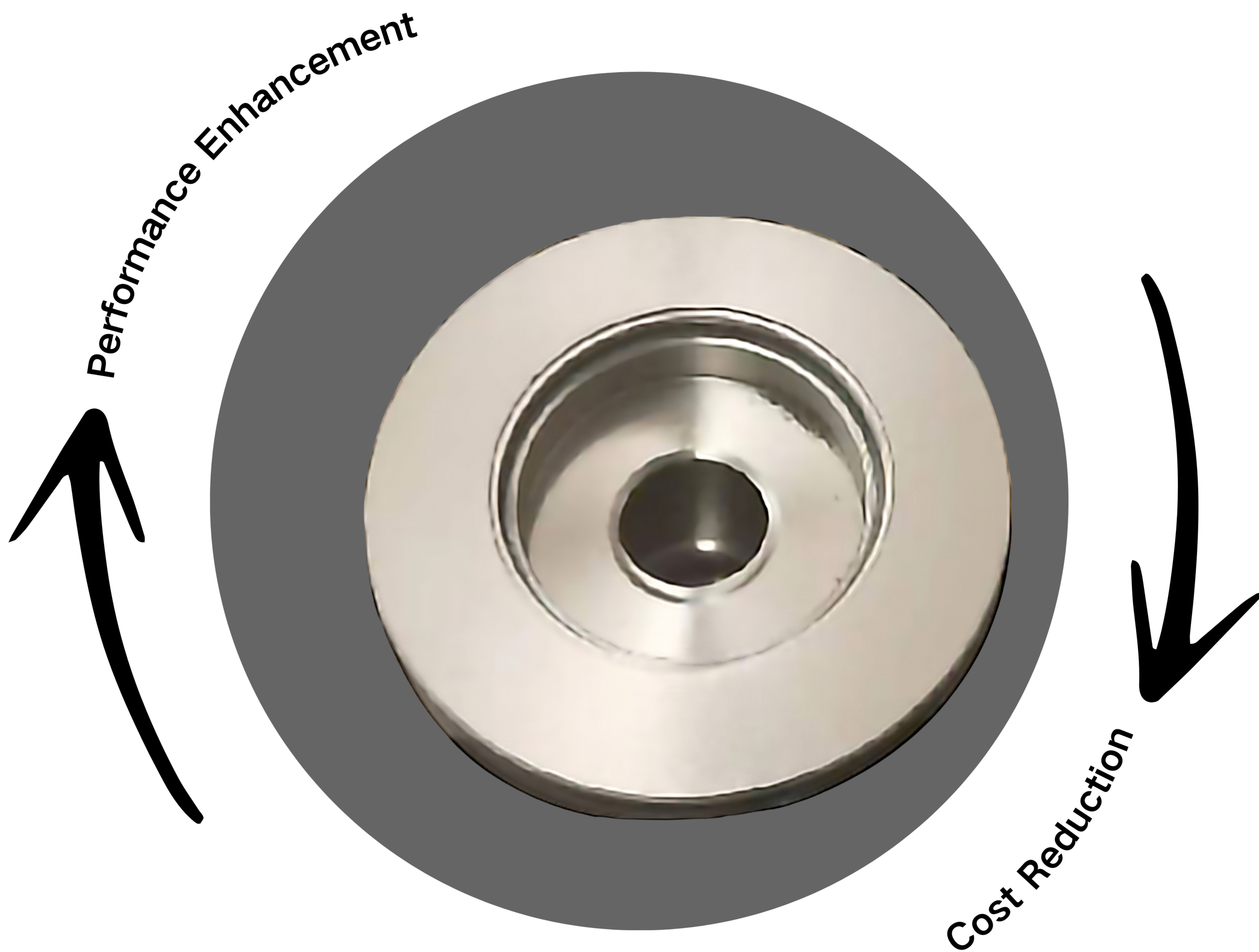
GROOVE INTRODUCTION

Table of Grade Machining Precision Ranges



Groove	Illustration	Features	Suggested usage amount	
			Feed rate	Cut depth
TC		I Suitable for semi-finishing and roughing of cast iron materials. II Suitable for semi-finishing and roughing of cast iron materials.	0.1-0.3-0.6	0.05-2.0-6.0

Manufacturing Example



Compare

A leading brand in China
55 pieces

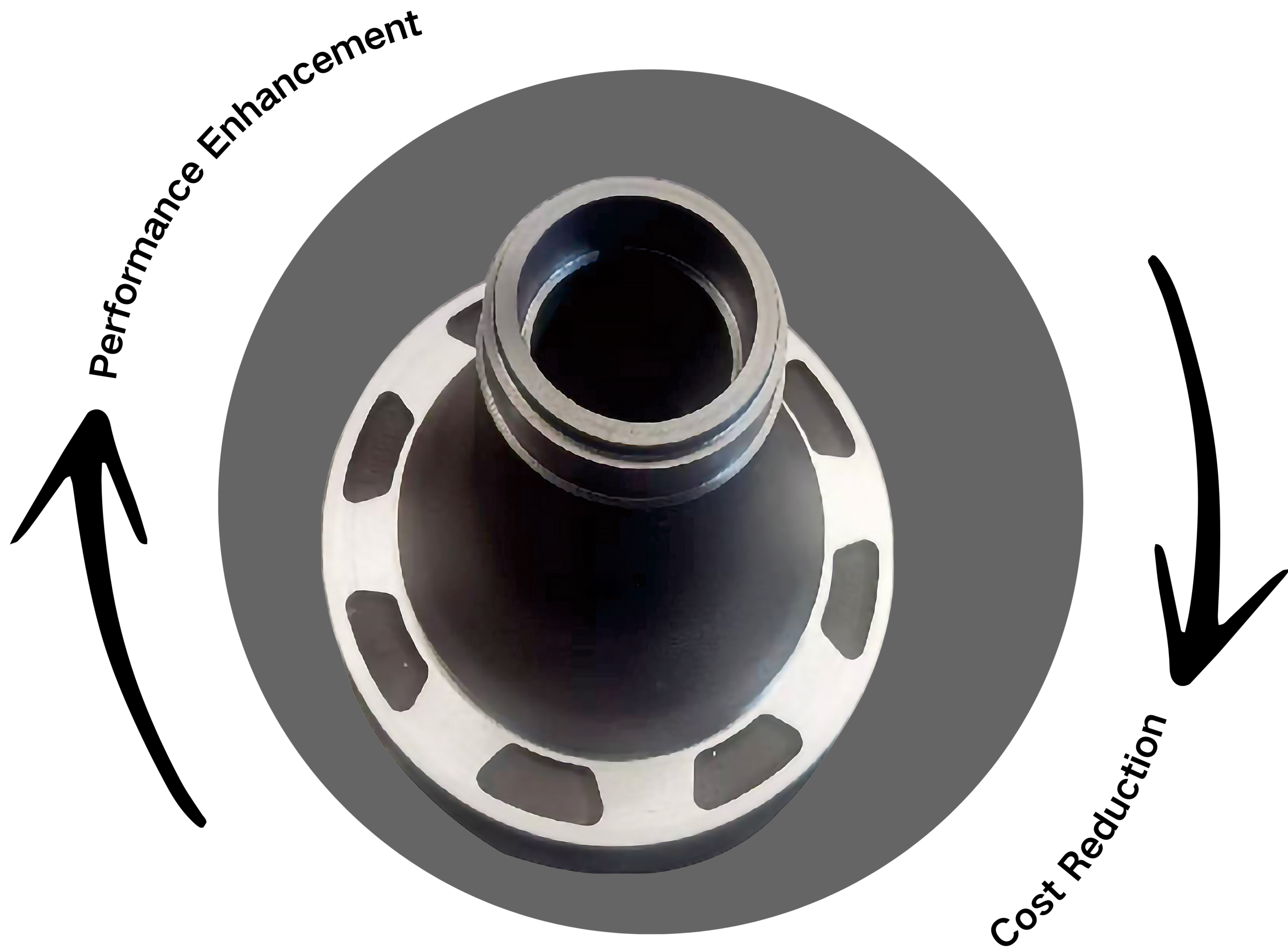
Extended tool life 13%



Great wall
62 pieces

Workpiece material	Brake disc(HT250)
Insert Grade	GW5015
Insert Size	WNMGO80408
Cutting parameters	Vc=250m/min;f=0.2mm;Ap=2mm
Cooling method	Air cooling

GROOVE INTRODUCTION



Compare

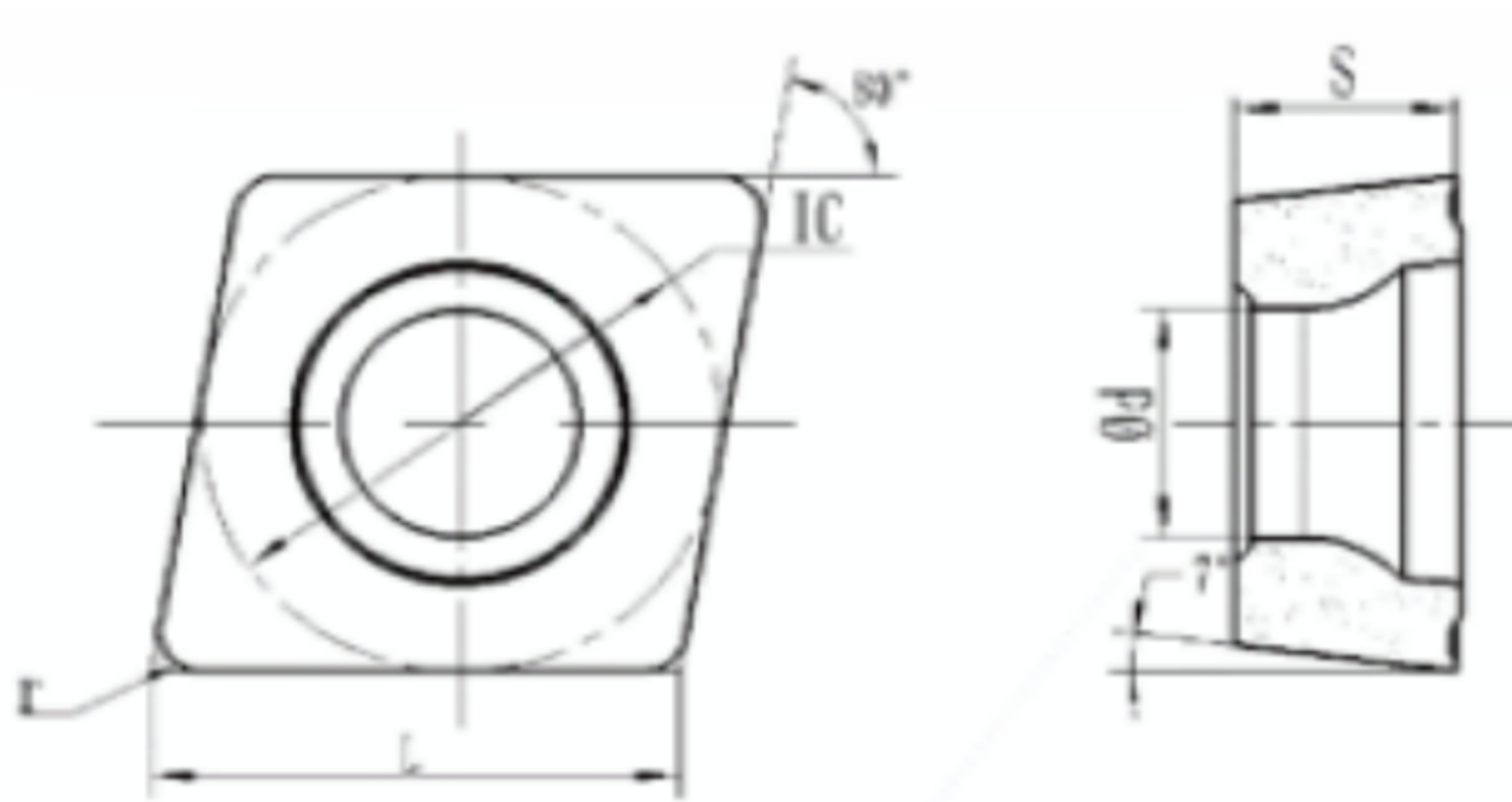
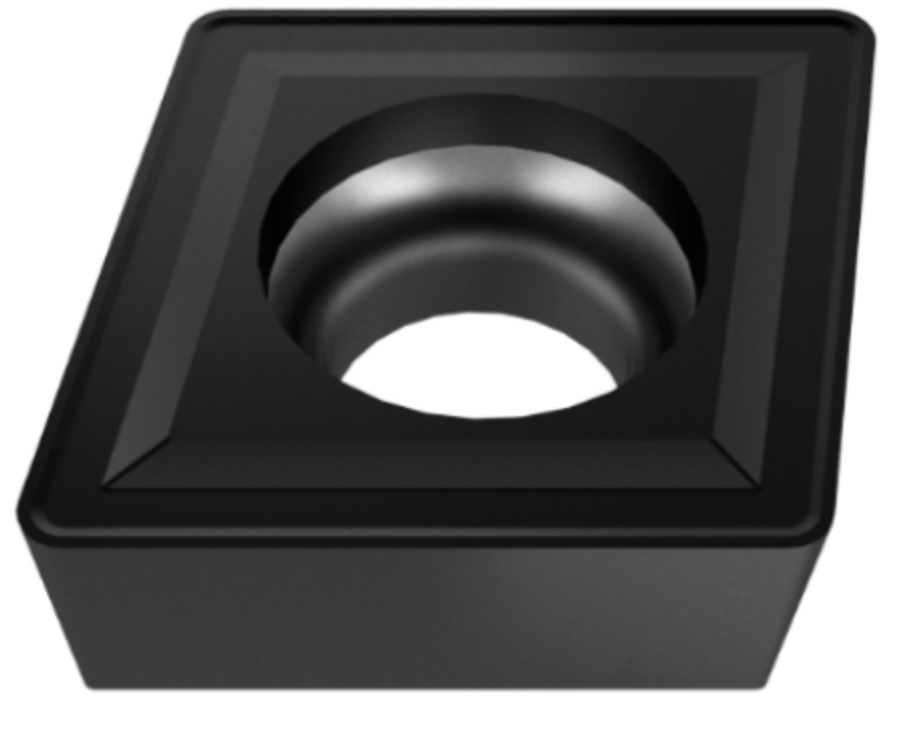
A leading international brand
9 pieces

equivalent performance

Great wall
9 pieces

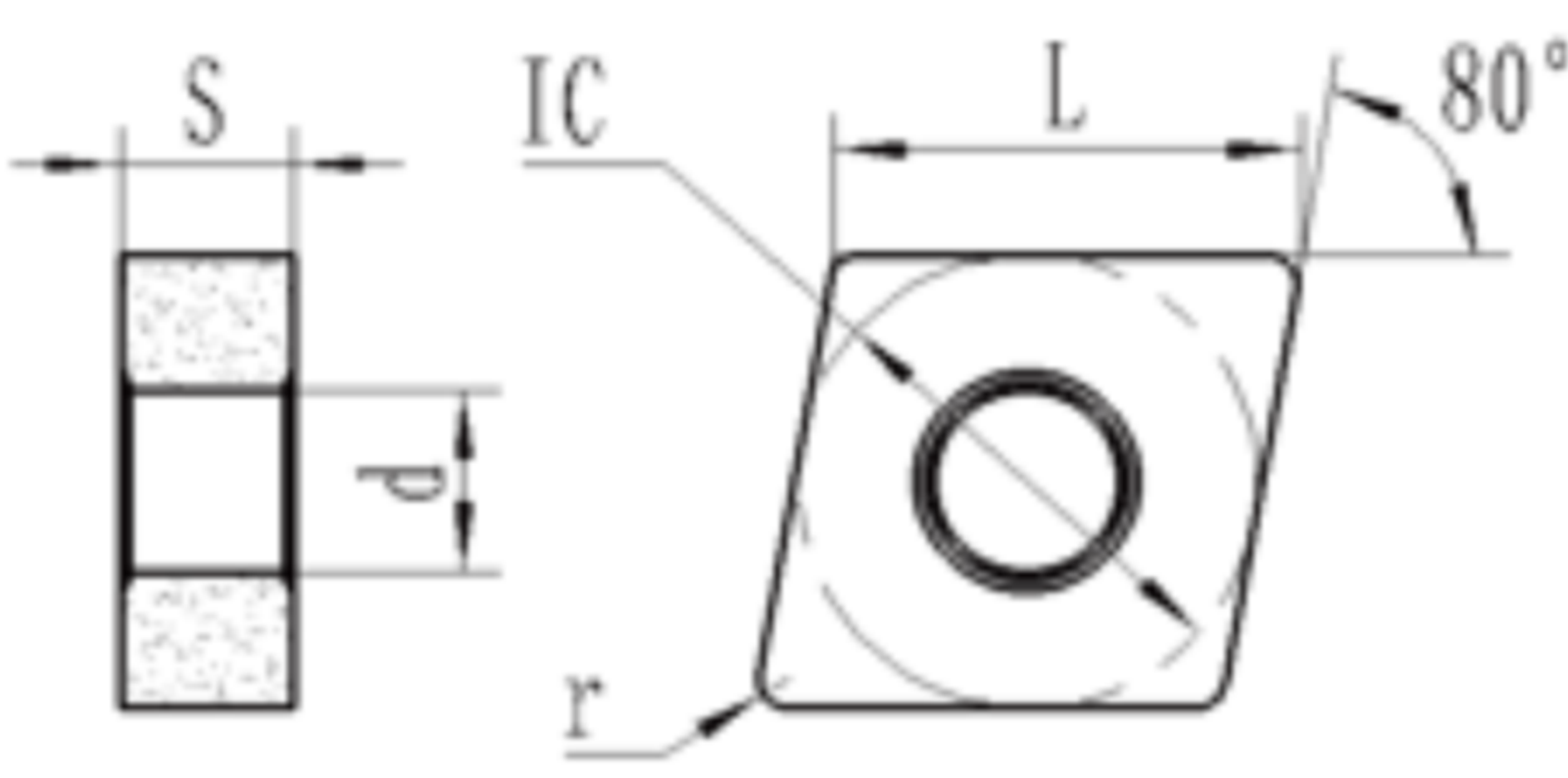

Workpiece material	QT450
Insert Grade	GW5015
Insert Size	WNMG080408
Cutting parameters	$V_c=130\text{m/min}; f=0.2\text{mm}; A_p=2\text{mm}$
Cooling method	Air cooling

List of Models

CC□□								
		Size(mm)					Grade	
Insert shape	Size	IC	S	L	d	r	GW5005	GW5015
	CCMT060204-TC	6.35	2.38	6.4	2.8	0.4	○	★
	CCMT120404-TC	12.7	4.76	12.9	5.56	0.4	○	★
	CCMT120408-TC	12.7	4.76	12.9	5.56	0.8	○	★

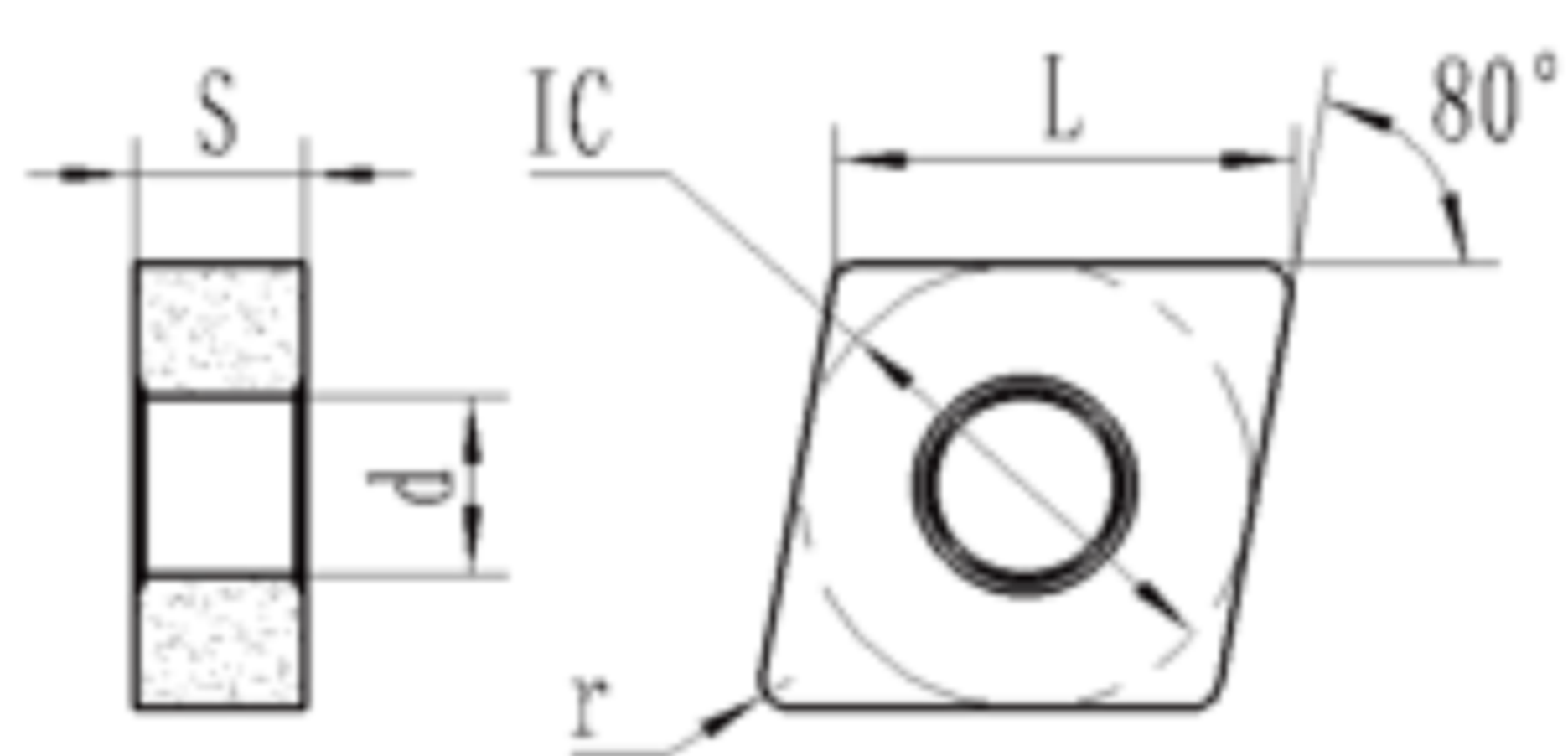
★Featured Grade ○ Make-to-Order

List of Models

CN□□								
		Size(mm)					Grade	
Insert shape	Size	IC	S	L	d	r	GW5005	GW5015
	CNMG120404-TC	12.7	4.76	12	5.16	0.4	○	★
	CNMG120408-TC	12.7	4.76	12	5.16	0.8	○	★
	CNMG120412-TC	12.7	4.76	12	5.16	1.2	○	★
	CNMG120416-TC	15.875	6.35	16.1	6.35	0.8	○	★
	CNMG160608-TC	15.875	6.35	16.1	6.35	1.2	○	★
	CNMG160612-TC	15.875	6.35	16.1	6.35	1.6	○	★
	CNMG160616-TC	19.05	6.35	19.3	7.94	0.8	○	★

★Featured Grade ○ Make-to-Order

DN□□



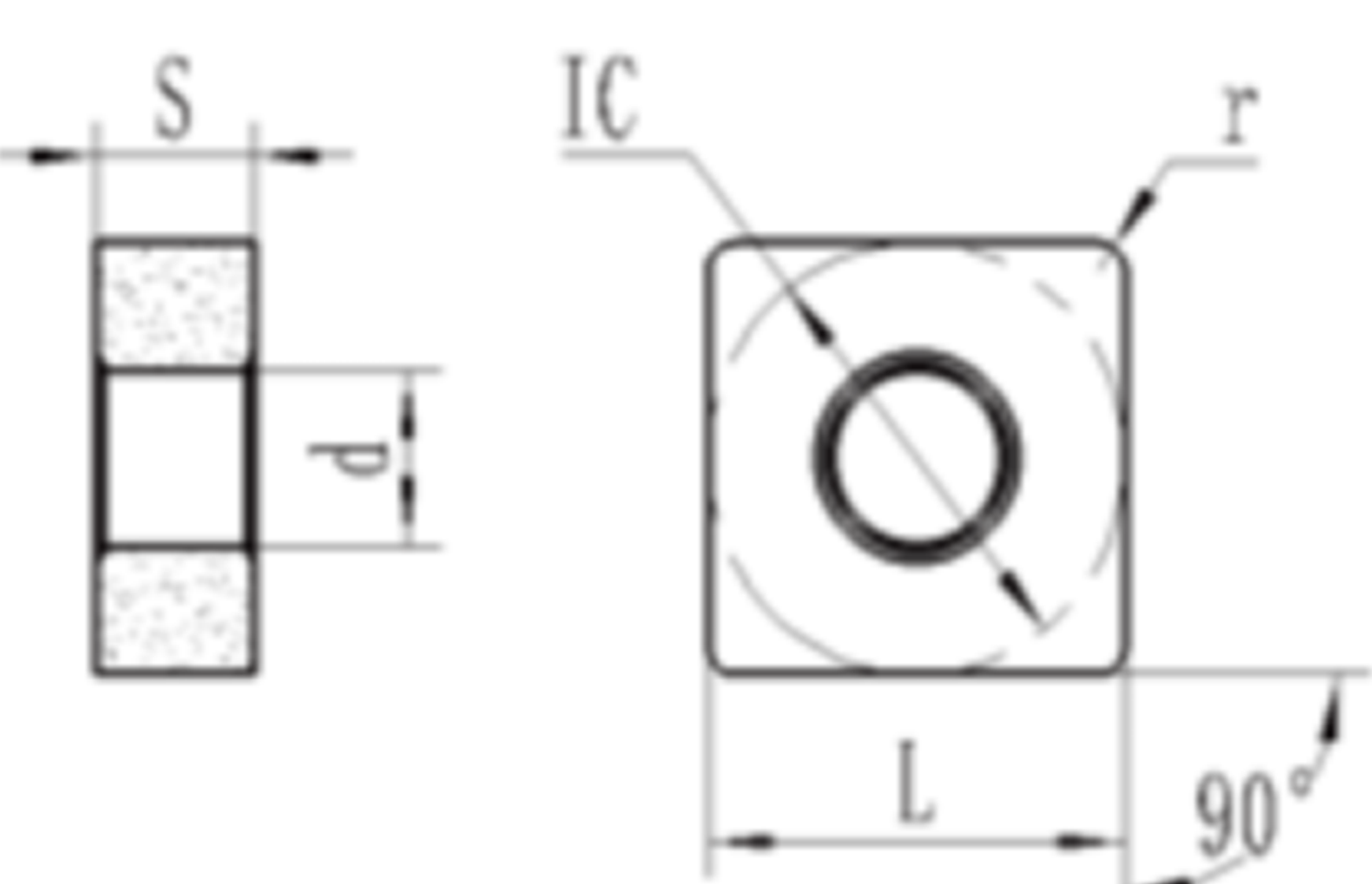

Size(mm)

Grade

Insert shape	Size	IC	S	L	d	r	Grade	
							GW5005	GW5015
	DNMA150404	12.7	4.76	15	5.16	0.4	○	★
	DNMA150408	12.7	4.76	15	5.16	0.8	○	★
	DNMA150412	12.7	4.76	15	5.16	1.2	○	★
	DNMA150604	12.7	6.35	15	5.16	0.4	○	★
	DNMA150608	12.7	6.35	15	5.16	0.8	○	★
	DNMA150612	12.7	6.35	15	5.16	1.2	○	★
	DNMA150616	12.7	6.35	15	5.16	1.6	○	★

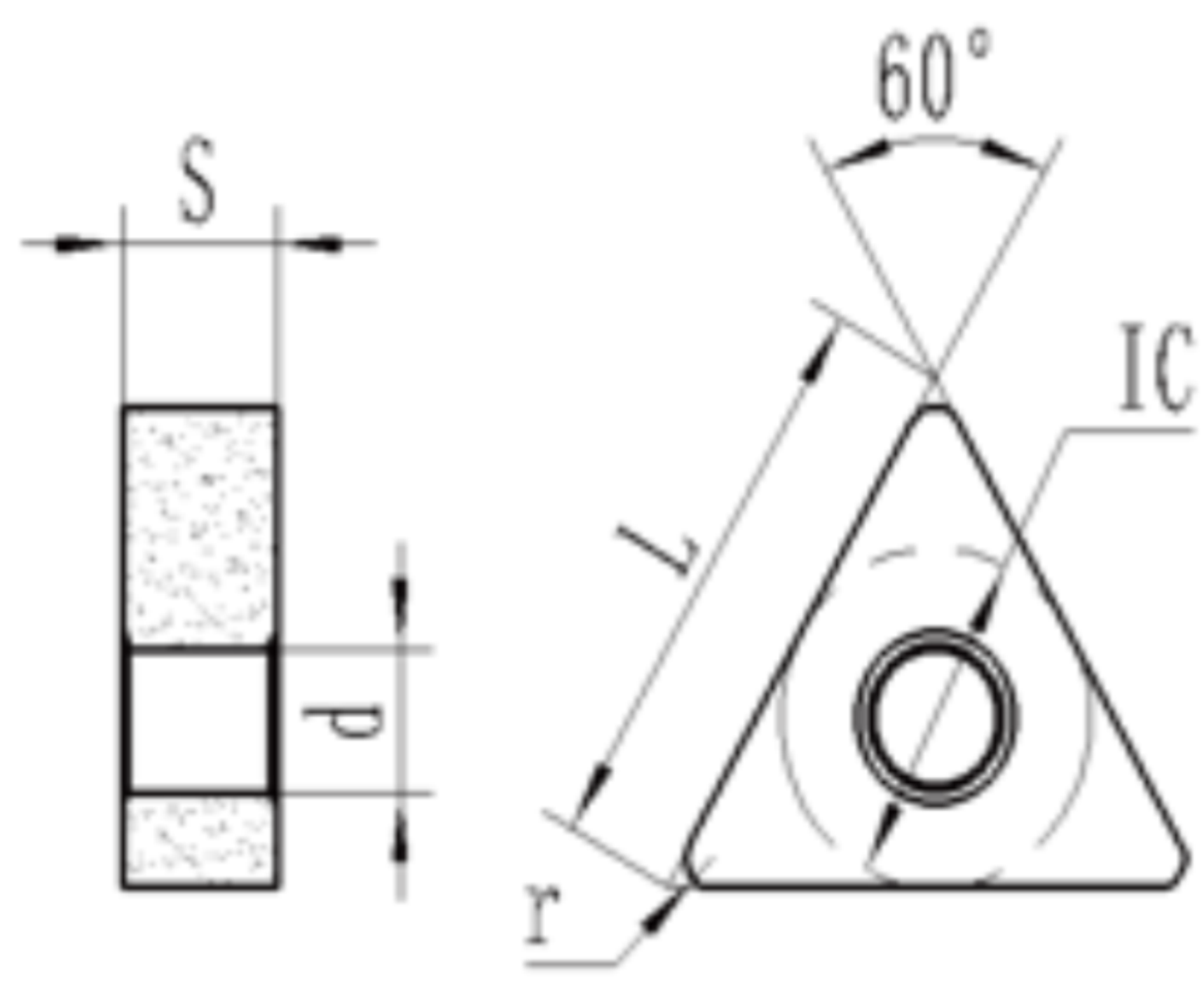
★Featured Grade ○ Make-to-Order

List of Models

SN□□								
		Size(mm)					Grade	
Insert shape	Size	IC	S	L	d	r	GW5005	GW5015
	SNMA120408	12.7	4.76	12	5.16	0.4	○	★
	SNMA120412	12.7	4.76	12	5.16	0.8	○	★
	SNMA120416	12.7	4.76	12	5.16	1.2	○	★
	SNMA150608	15.875	6.35	15	6.35	0.8	○	★
	SNMA150612	15.875	6.35	15	6.35	1.2	○	★
	SNMA190612	19.05	6.35	19	7.93	1.2	○	★
	SNMA190616	19.05	6.35	19	7.93	1.6	○	★

★ Featured Grade ○ Make-to-Order

TN□□



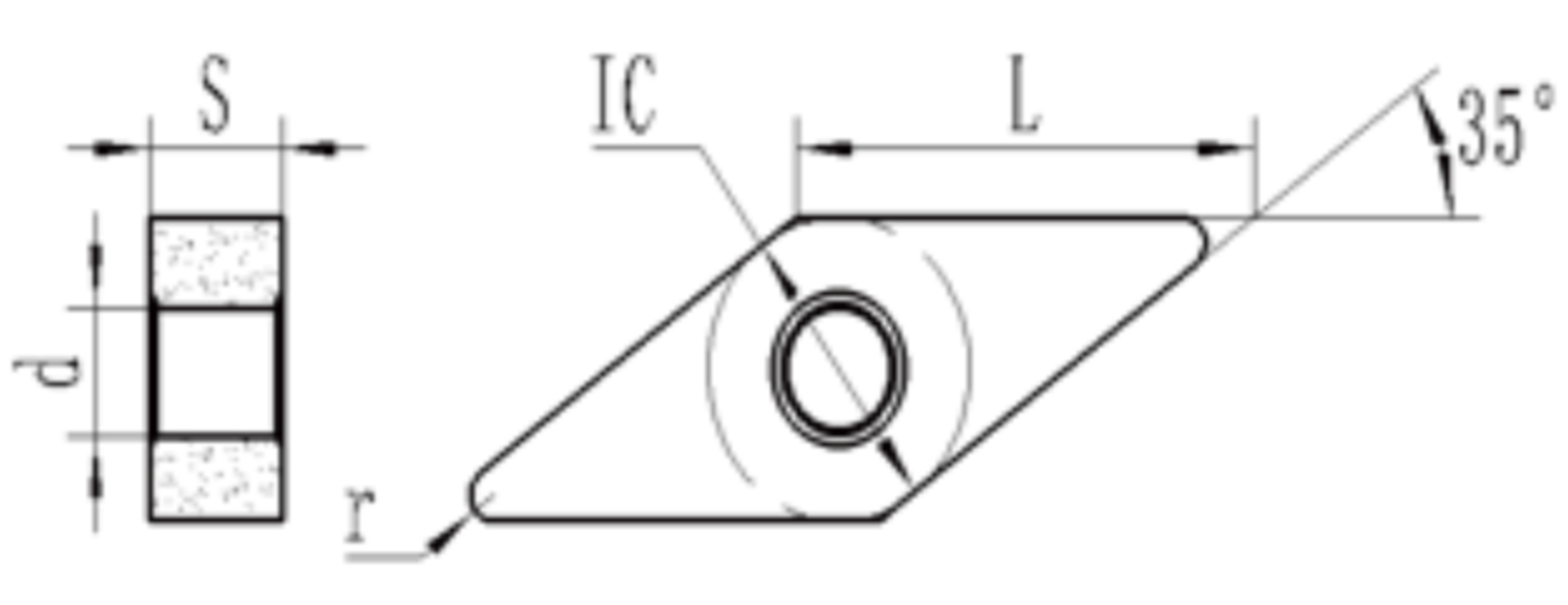
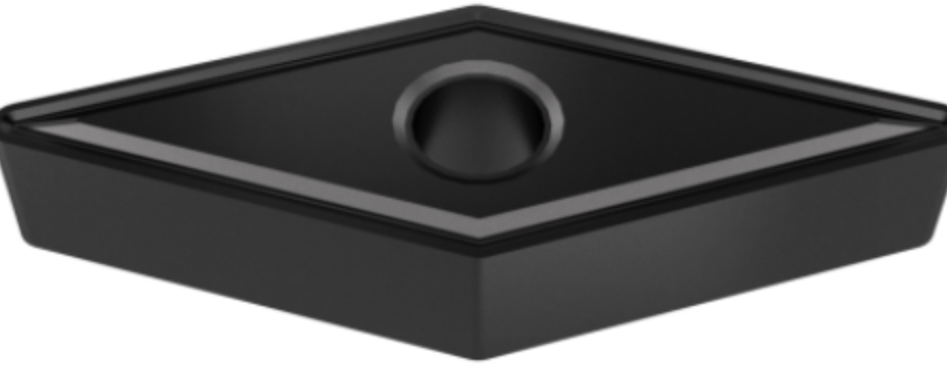
Size(mm)

Grade

Insert shape	Size	IC	S	L	d	r	GW5005	GW5015
	TNMG160404-TC	9.525	4.76	16	3.81	0.4	★	★
	TNMG160408-TC	9.525	4.76	16	3.81	0.8	★	★
	TNMG160412-TC	9.525	4.76	16	3.81	1.2	★	★
	TNMG220412-TC	12.7	4.76	22	5.16	0.8	★	★
	TNMG220416-TC	12.7	4.76	22	5.16	1.2	★	★

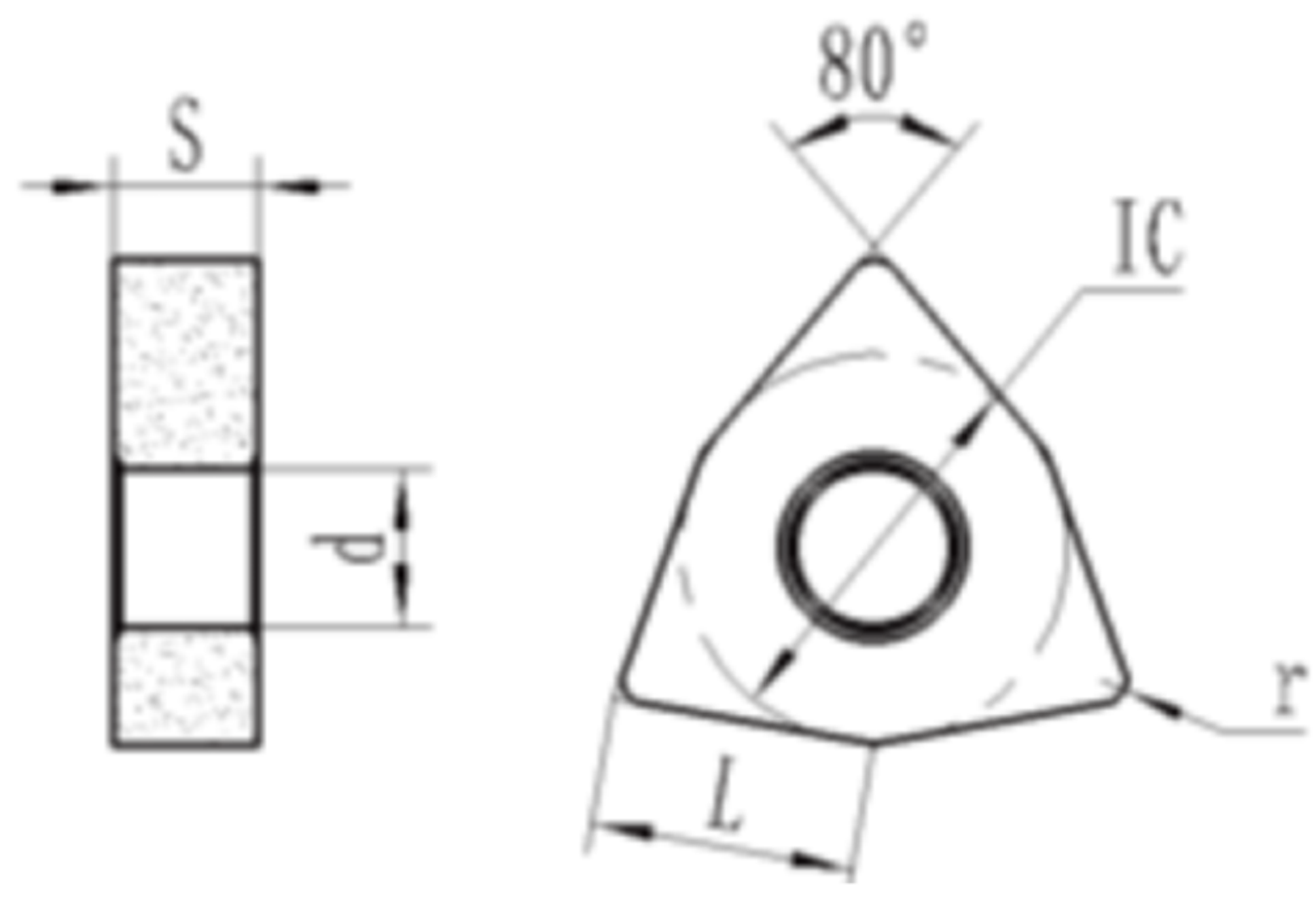
★Featured Grade ○ Make-to-Order

List of Models

VN□□								
		Size(mm)					Grade	
Insert shape	Size	IC	S	L	d	r	GW5005	GW5015
	VNMG160404-TC	9.525	4.76	16	3.81	0.4	★	★
	VNMG160408-TC	9.525	4.76	16	3.81	0.8	★	★
	VNMG160412-TC	9.525	4.76	16	3.81	1.2	★	★

★ Featured Grade ○ Make-to-Order

WN□□



Size(mm)

Grade

Insert shape	Size	IC	S	L	d	r	GW5005	GW5015
	WNMG080404-TC	12.7	4.76	8	5.16	0.4	★	★
	WNMG080408-TC	12.7	4.76	8	5.16	0.8	★	★
	WNMG080412-TC	12.7	4.76	8	5.16	1.2	★	★

★Featured Grade ○ Make-to-Order

 Add:No. 96 Nanyi Road, Chengdu Economic and Development
Zone.Longquanyi District,
Chengdu City, Sichuan Province

 Contact Information
(028) 88432471

CHENGDU
GREATWALL CUTTING TOOLS
CO.,LTD

Professional marketing team
and technical service team,
to provide personalized
professional products
and complete solutions.

